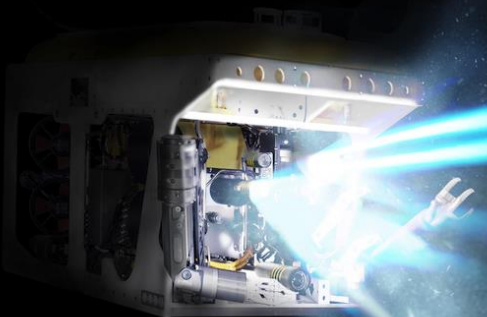




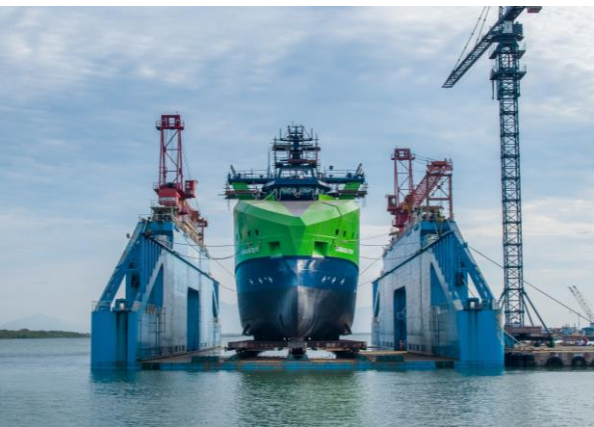
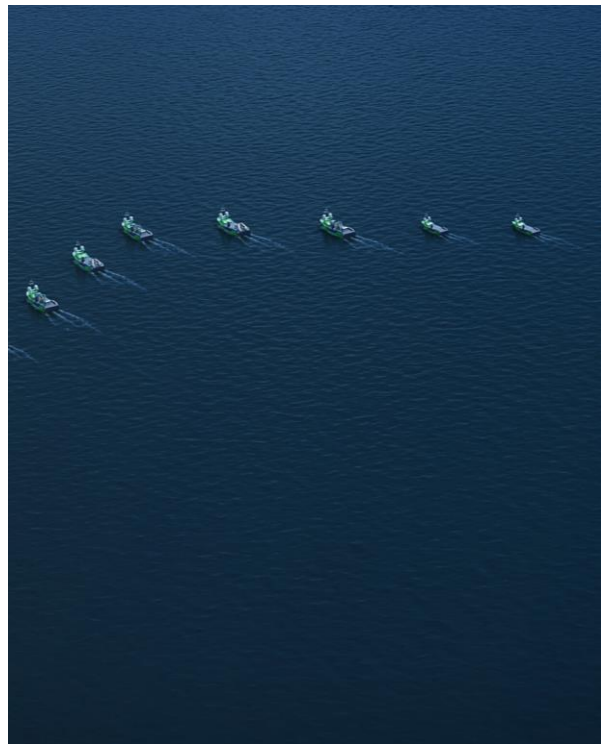
**DEEPSEA**  
SOLUTIONS





**REMOTE, RESIDENT AND ELECTRIC**

# Armada & the Remote Deployment of Payloads



Armada will consist of a fleet of 23 robotic ships, comprising 21m, 36m, 78m and 86m vessels.

With zero or limited crew onboard we must be robust.

With demanding clients and vital infrastructure, we must be reliable.

With our clear environmental objectives, we must avoid damaging our oceans.





# Tool Integration and Interfacing

Tooling and sensors mobilised to Armada require greater scrutiny than conventional platforms to ensure robust and reliable operation.

## Dynamic Payload Control

- The DPC integrates Payload (ROV /LARs systems / tooling) with remote vessel operation
- Safety Interlocks and Automated Launch and Recovery sequences
- Control of 3<sup>rd</sup> party tooling

## Remote Sensor Command, Control and Data Acquisition

- Individual Sensor Command and Control
- Real-Time feedback for online quality control
- Generates insights for transmission over low bandwidth links

